

# KICHAKA ZUMBUA

Ruaha National Park, Tanzania



Open All Year

Situated atop a remote ridge in the Eastern Corner of Ruaha, this stunning and luxurious camp blends in perfectly with its rocky backdrop overlooking perhaps the most scenic section of the entire Ruaha River valley.

About as comfortable as it is possible to get in such isolation, our elegant yet rustic rooms share sweeping views and are the perfect dwelling away from the hot sun when not out on safari. Each room consists of a central airy and spacious tent with thatched roof and raised platform base, open in the day to allow for views and breeze, but closed in the night for safety and complete bug protection. Adjoining each tent sits a lavish bathroom complete with flushing loo, bathtub and outdoor shower and because there is never too many options on how one can refresh oneself, on the other side of the tent is your own personal plunge pool for that instant gratification after your morning activities.

The privacy and seclusion of the rooms contrast beautifully with the social feel and set-up of the main area. Split into 3 sections, a relaxed lounge with comfy sofas with an information centre where you can admire the views or read a book with a cup of tea, a dedicated dining room where you can enjoy an excellent and varied menu of cuisine prepared by our chefs, and finally a central pool and well stocked “Star-Bar” to chat by the fire or admire the tremendous night sky.

# RUAHA NATIONAL PARK

A trip to the Ruaha National Park in Tanzania is an exhilarating adventure into the unknown. Very few other wildernesses in Africa can convey the sheer isolation and expanse of this land that epitomises the Africa of 'old' that was felt in times gone by. Far far away from the 'madding' crowds which haunt the famous Northern Circuits, Ruaha lies in an untouched and incredibly remote area of Southern Tanzania, and is visited by relatively few tourists making it one of Africa's wildest Parks for the safari enthusiast.



## WILDLIFE

Ruaha's stunning, variable landscapes and habitats have ensured that a wealth of diversity occurs at all levels in its flora and fauna. Its tremendous size which encompasses entire ecosystems also contributes to the wonderful abundance of life that Ruaha possesses.

Many creatures are of specialist habitats and unlike the more common generalists which scatter all of Africa's National Parks, Ruaha boasts many near endemic, and uncommon species not seen in many other areas. This Park also contains one of the highest concentrations of Elephants in the world and during the dry season vast numbers of these pachyderms can be encountered making Ruaha one Africa's greatest Elephant parks.

### DRY SEASON

JUNE-NOVEMBER

Without doubt the prime months for game viewing in Ruaha. Water becomes scarce as the rivers and pans begin to dry up forcing the game closer to the more permanent water sources offering great viewing opportunities. Game sightings improve as the grass dies out and all the leaves fall of the trees as they commence their 'hibernation', enabling us to see much deeper into the vegetation. Brown, yellow and barren defines the landscape, a different beauty to that of the rains. Bitter nights can occur, especially in a tent, which have their effects thwarted by roaring fires in the camp and hot water bottles in the beds.

### WET SEASON

DECEMBER-MARCH

When it rains it pours!! Ruaha in the rains can receive considerable amounts of water which turns the land into pure paradise. Grass emerges from ground so cracked and bare that you wonder if anything could ever recover from this. But recover it does into every shade of Green imaginable over an incredibly short time. Rivers are flowing, flowers emerging and there is a sense of peace with the animals in the Park. A myriad of numerous little creatures, unseen over the dry periods come to life in this period, as well as a huge influx of birds arriving from pastures far far away, some as far as Russia!

### GREEN SEASON

APRIL-MAY

The big rains are over however the land is still lush and green and many of the seasonal rivers still flow, there is a chance of some scattered showers. The Park roads have dried up and are passable over most their range allowing us to push further into the Park. The grass slowly begins to yellow and many of the migrant birds begin to leave and make their way back to the Northern hemisphere. Water is still abundant so the game is scattered over much of the park. It is possible to see the beauty of the land in a state of paradise without the actual heavy rain itself.



# UNIQUE SELLING POINTS



Suitable for children 12 and above, however walking safaris are restricted to 16 and above.

- Located in the Lunda area overlooking arguably the best view of the Great Ruaha River often filled with animal crossings.
- Famous for their speciality of walking safaris with some of the finest elephant sightings on foot.
- Intimate and charming camp which is home to owners Andrew Molinaro, Noelle Herzog & their son Huxley.



## Tent Facilities

3 Zumbua suits, complete with flushing loo, bathtub, outdoor shower & private plunge pool.

3 bandas opening in 2024



## Power

Solar Powered Charging available for phones, cameras, & laptops.

English Style 3 pin outlets



## Activities

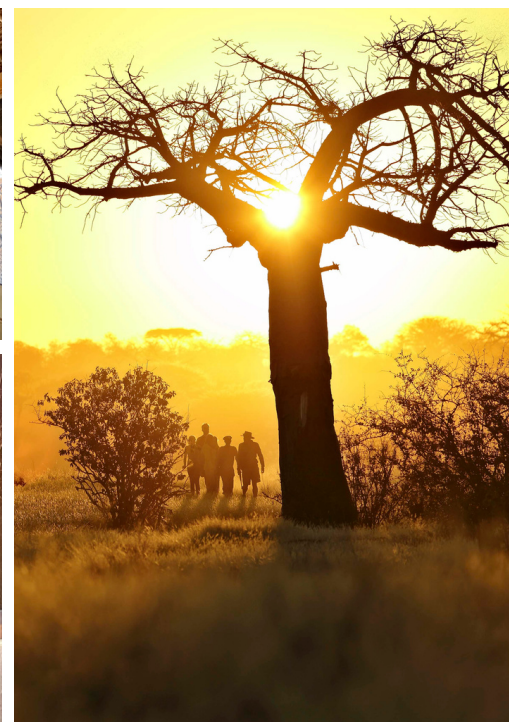
Walking Safaris, Game Drives, Night Game Drives, Bird Watching & Star Gazing

## LOCATION

GPS coordinates:  
7° 26' 46" S, 35° 14' 07" E

## ACCESS

1 hour 40 minute flight from Dar es Salaam to Ruaha National Park.  
Arriving into Msembe Airstrip



# SITE PLAN



# MAP OF TANZANIA

